

**Formal consultation to remove
the Learning Resource Base
provision from
Llanwern High School**

10 July – 24 September 2017



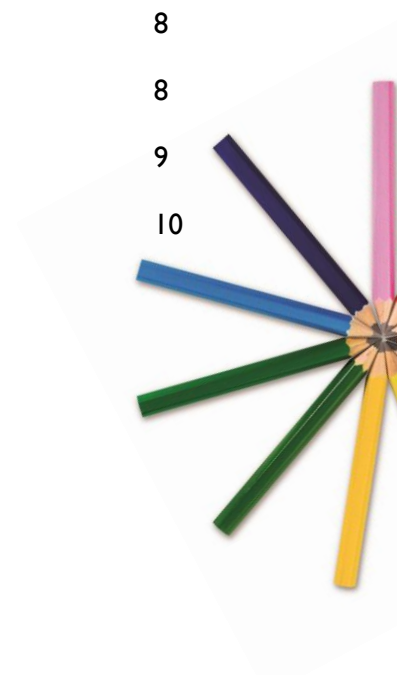
*Information can also be arranged in other community languages if needed.
Please contact us on 01633 656656 to arrange.*

Croesawn alwadau yn gael yn Gymraeg / We welcome calls in Welsh



Table of contents

Introduction	2
The consultation process	2
The proposal	4
Current provision	4
Impact and implementation of proposal	7
Financial summary	7
Alternative options considered	7
School organisation arrangements	8
Advantages and disadvantages	8
Risks	9
Consultation response pro-forma	10





Introduction

The purpose of the consultation is to seek views on the following proposal:

To permanently remove the Learning Resource Base provision currently at Llanwern High School with effect from January 2018.

This is your chance to ask questions and make comments that will be considered when the Council decides how to proceed.

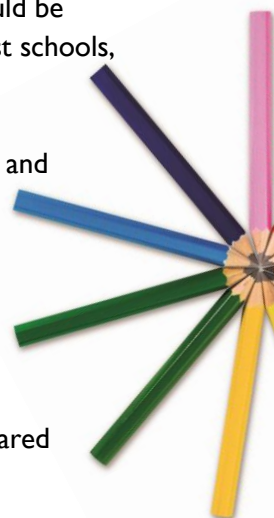
This formal consultation period:

- **Begins on Monday 10 July 2017**
- **Ends at midnight on Sunday 24 September 2017**

As part of the budget determinations for the 2017/2018 financial year, Newport City Council's Cabinet took a decision to withdraw the funding associated with the Learning Resource Base (LRB) provision currently at Llanwern High School. This supported the strategy that individual pupil needs could be better met at more inclusive Additional Learning Needs (ALN) settings within mainstream host schools, and would also reduce the significant operational running costs of the current provision.

The remit of the LRB is to provide a nurturing environment to support pupils who have social and emotional difficulties to develop resilience skills and enable them to make a successful return to full time mainstream education by the end of Year Eight, or sooner if possible. The pupils have access to a range of support for them to successfully access the mainstream curriculum.

Some of the existing pupil cohort is already due to move into mainstream education by September 2017 and alternative small group placements in mainstream host schools are being considered for the remaining pupils from the same date. This will result in the LRB being declared empty from the start of the 2017/18 academic year, pending a decision on permanent closure.



The consultation process

The consultation process represents an opportunity for people to learn about the proposal, ask questions and make comments that will be recorded and summarised in a consultation report. This report will be published on the council's website and will be considered when the council decides on the way forward.

The consultation will involve two drop-in sessions with those most directly affected by the proposal, where council officers will be on hand to explain the proposals in more details and answer any questions.

Location	Date / Time	Session
Llanwern High School, Hartridge Farm Road Newport, NP18 2YE	Thursday 13 July 2017 10.00am - 12 noon	Drop-in event
Civic Centre, Newport, NP20 4UR	Tuesday 12 September 2017 4.30pm - 6.30pm	Drop-in event

Comments and questions can be submitted using the enclosed response pro-forma. This pro-forma will also be available at the drop-in sessions or can be downloaded from www.newport.gov.uk/schoolreorganisation

These responses should be returned to the Education Service Development Manager, Room 425w, Newport City Council, Civic Centre, Newport NP20 4UR. Alternatively comments and completed pro-forma can be returned by email to school.reorg@newport.gov.uk



Social media facilities such as Twitter and Facebook will also be available.

Please note that responses made to this consultation will not be counted as objections to the proposal, they will be counted as adverse comments. Objections to a proposal can only be registered following the publication of a statutory notice.

The deadline for all responses is midnight on Sunday 24 September 2017.

Following consultation, Newport City Council's Cabinet Member for Education & Skills will consider the views expressed and then decide whether to proceed with the proposal. If the decision is taken to proceed, a statutory notice will be published in the local press and at the school. The statutory notice period will last for 28 days following the date of publication and enables people to express their views in the form of supporting or objecting to the proposals.

If no objections are received following the publication of the statutory notice, Newport City Council's Cabinet Member for Education & Skills will make the final decision as to whether to proceed.

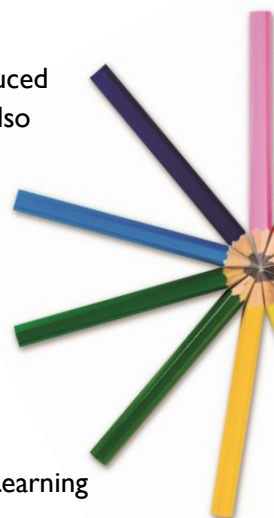
Arrangements for the participation of children and young people

A Children and Young People's Everyday Summary version of this consultation has been produced and is available from Llanwern High School or from Newport City Council. The council will also consult with affected pupils at Llanwern High School. Copies of this consultation document and the Children and Young People's Everyday Summary version are available:

- on the council's website at www.newport.gov.uk/schoolreorganisation
- by emailing school.reorg@newport.gov.uk or
- by telephoning 01633 656656.

Who will we consult with?

- Teachers, staff and the governing body of Llanwern High School;
- Parents, carers and guardians of pupils attending Llanwern High School, including the Learning Resource Base provision;
- Pupils at Llanwern High School;
- Parents, carers and guardians of children attending Learning Resource Base classes in primary and secondary schools across the City;
- The Headteachers and Governing Bodies of all other Newport schools which host Learning Resource Base classes;
- All Newport City Council elected members;
- All Newport Community Councils;
- The Welsh Ministers;
- Assembly Members (AMs) and Members of Parliament (MPs) representing the area served by the schools subject to the proposals;
- Other Local Authorities across the South East Wales Consortium region, including relevant Transport departments;
- The South East Wales Education Achievement Service;
- The Church in Wales, Diocese of Monmouth;
- Roman Catholic Archdiocese;
- Estyn;
- Teaching and staff trade unions representing teachers and staff at Llanwern High School;
- The Police and Crime Commissioner for Gwent;
- The local Communities First partnership (or equivalent);
- SNAP Cymru.





What do you have to consider?

The remainder of this document sets out the rationale for the proposal. We would like you to consider the information contained within the document and to hear your views as to whether or not you support the proposal.

The proposal

This is a proposal to formally close the Learning Resource Base (LRB) hosted at Llanwern High School. As part of the budget determinations for the 2017/2018 financial year, Newport City Council's Cabinet took a decision to withdraw the funding associated with the provision. This supported the strategy that individual pupil needs could be better met at more inclusive Additional Learning Needs (ALN) settings within mainstream host schools, and would also reduce the significant operational running costs of the current provision.

Some of the existing pupil cohort is already due to move into mainstream education by September 2017, and alternative small group placements in mainstream host schools are being considered for the remaining pupils from the same date. This will result in the LRB being declared empty from the start of the 2017/18 academic year, pending a decision on permanent closure.

Permanently closing the provision from January 2018 will enable the classroom space currently utilised for the LRB to be brought back into mainstream use. Potentially, this could result in additional capacity and an increased Published Admission Number (PAN) for the school to assist in meeting demand for secondary school places across the city.

This proposal also serves to support and promote inclusion as pupils will now be taught in a mainstream environment, rather than a small provision, with additional support and increased outreach services from the Pupil Referral Unit being provided where appropriate to meet the specific needs of individual pupils.

Current provision

Llanwern High School opened in April 2012 on the site of the former Hartridge High School with capacity for 1300 pupils of statutory school age, plus post-16 facilities. There has always been a LRB facility at the school, although the capacity of the provision was significantly reduced from 21 places to 8 places in September 2015. The LRB currently operates from four classrooms within the main school building. Ceasing the provision would enable these rooms to be brought back into mainstream use.

The remit of the LRB is to provide a nurturing environment to support pupils who have social and emotional difficulties to develop resilience skills which enable them to make a successful return to full time mainstream education by the end of Year Eight, or sooner if possible. The pupils have access to a range of support for them to successfully access the mainstream curriculum.

As at April 2017, there were only seven pupils registered as being on roll at the provision. Two of these seven pupils are due to return to their respective mainstream schools during the summer term of 2017, reducing the remaining pupil number to just five. Four of these pupils live within the designated catchment area for Llanwern High School, with the fifth residing in the Lliswerry High School catchment area. It is planned that these five pupils will all return to mainstream education in September 2017, with additional support being provided where appropriate to meet their specific needs.





It is proposed that these pupils will be placed in small group provision with the mainstream setting supported by the Additional Learning Needs Co-Ordinator (ALNCO) and her team. They will continue to access pastoral care and interventions that will address their emotional and social needs, any dips in progression will be monitored, and regular monitoring meetings will be held with parents. There is already some integration into mainstream on a 1 day per week basis, and it is felt that this new arrangement will offer increased flexibility for pupils in accessing the subjects that they feel confident in on a more regular basis with a view to building on this platform. This will certainly aid inclusion as the pupils will be in the main hub of school life where they can build resilience and become independent learners ready to access further education or the world of work.

The LRB is supported by four members of staff – one teacher, who has a Teaching and Learning Responsibility (TLR) point and an associated Special Education Needs allowance, and three Level 3 Teaching Assistants. If the LRB was to close, these posts would be declared at risk of redundancy. The Governing Body could however choose to utilise these individuals elsewhere across the school to meet curriculum needs.

This proposal could result in an increased pressure on the Special Educational Needs budget if alternative placements needed to be sourced from elsewhere. It is also clear that pupils and their parents could be anxious about any proposed movement, and these transition arrangements would need to be handled very sensitively. This could result in a need for additional staff resources in terms of the Education Psychology and Additional Learning Needs teams in supporting the pupils concerned.

It is not perceived that there will be any increased pressure on the Pupil Referral Unit however as it is intended that the current pupil cohort will return to mainstream provision within other secondary schools across the city. Notwithstanding this however, any pupils who might otherwise have been considered for future placements at the setting will require provision elsewhere if the LRB is closed.

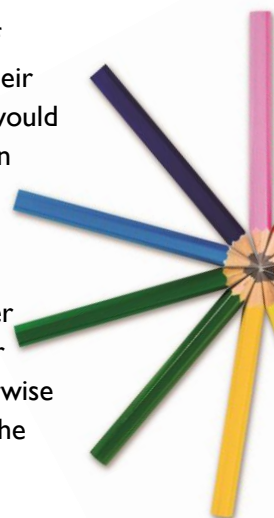
To support this, the local authority is currently undertaking a review of specialist provision across the secondary sector, and this will include ensuring that a sufficient number of placements are available to meet the needs of all relevant pupils. This review will be concluded shortly, for implementation in September 2017.

Pupil numbers

The current capacities of the registered Learning Resource Bases at Newport secondary schools are as follows:

School name	Capacity	Year groups	Current number on roll
Llanwern High	8	Yrs 7 & 8	7
St Julians School	60	Yrs 7 – 11	48
The John Frost School	12	Yrs 7 - 11	12

Therefore the total number of places available in Learning Resources Bases across Newport secondary schools is 80, although only 67 are currently filled. This proposal recommends reducing this total capacity by 8 to 72 across all statutory school age year groups.





All requests for specialist provision placements across the city are considered by the Special Educational Needs (SEN) Panel which consists of a range of education professionals from across the LA and schools, as well as wider inclusion representatives and SNAP Cymru.

The Panel will consider requests on an individual basis in line with the agreed set of criteria for admission. All decisions taken by the SEN Panel are conveyed in writing to the applicant with a clear rationale provided for the decision taken. The uptake of placements will be robustly monitored by the LA and the Headteacher as well as the SEN Panel, with opportunities for re-integration into alternative education establishments for pupils as deemed appropriate. This will enable placements to be allocated to pupils who require a specialist placement, with on-going review of suitability as per the relevant statement of SEN.

Quality and standards

Quality and standards in schools in Newport are monitored by Estyn and the Local Authority (LA). Estyn is the office of Her Majesty’s Chief Inspector of Education and Training in Wales. It is a Crown body, established under the Education Act 1992. Estyn is independent of the National Assembly for Wales but receives its funding from the Welsh Government under Section 104 of the Government of Wales Act 1998. Estyn inspects quality and standards in education and training providers in Wales.

The outcome of the most recent inspection for the three secondary schools that currently host LRB provisions are shown below:

School	Inspection date	Outcomes	Provision	Leadership & management	Overall summary	
					Performance	Prospects for improvement
Llanwern High School	January 2017	Adequate	Adequate	Adequate	Adequate	Adequate
St Julians School	December 2014	Adequate	Adequate	Adequate	Adequate	Adequate
The John Frost School	February 2014	Good	Good	Good	Good	Good

At Key Stage 3, Llanwern High is in quarter 4 for achievement at level 5+ in Mathematics and Science, but in quarter 3 for English and the CSI in 2016. Achievement has increased from 2014 in English (from 78.3% to 81%), Science (80.4% to 81%) and the CSI (68.1% to 70.6%), but has dropped in Mathematics (81.2% to 80.4%). There is a similar performance at level 6+ with Mathematics and Science in quarter 4 and English in quarter 3, and achievement increasing in English (25.4% to 34%) and Science (10.9% to 26.8%) but dropping slightly in Mathematics (31.2% to 30.7%). In 2016, performance in the CSI matched the family average (70.6%).

At Key Stage 4, the school is in quarter 3 for the Level 2 threshold including English and Maths (L2inc) and quarter 4 for the capped points score. Achievement at L2inc has increased from 40.8% in 2014 to 44.5% in 2016, whilst the capped points score has dropped from 297.2 in 2014 to 288.4 in 2016. In English, the school is in quarter 2 with an increase in performance from 2014 (60.8% to 61.3%), and quarter 4 in Mathematics with an increase in performance since 2014 (46.4% to 47.4%). In 2016, performance in the L2inc was above the family average (44.5% against 42.3%).



In the latest categorisation for secondary schools across Wales, the school has been placed in the “amber” support category, indicating that the school requires the second highest level of support to improve standards.

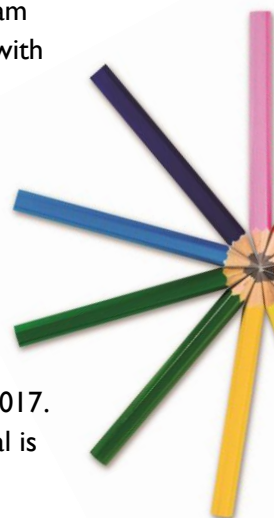
The council firmly believes that this proposal will have a positive impact on the provision and quality of educational outcomes in the secondary school sector, in terms of both mainstream and specialist provision needs. There is a risk that the current very small 8-place provision could lead to the pupil cohort being isolated from their relevant peer groups, albeit that there is some re-integration to the host school which is gradually increased during the placement. Moving the pupils to mainstream provision will support inclusion leading to improved outcomes and a reduced risk of pupils becoming classed as Not in Education, Employment or Training (NEET), through the availability of a wider and more enriched curriculum.

Impact and implementation of proposal

The council has an appropriate range of alternative placements available for pupils requiring specialist provision, all of which have the ultimate aim of eventual re-integration into mainstream provision. The alternative placements can be delivered more cost effectively when compared with the provision at Llanwern High School.

The permanent closure of this provision will enable the classroom space currently utilised for the LRB to be brought back into mainstream use. Potentially, this could result in additional capacity and an increased Published Admission Number (PAN) for the school to assist in meeting demand for secondary school places across the city.

It is intended that the existing pupil cohort will transfer either to mainstream education or alternatively to a more inclusive ALN setting within a mainstream host school by September 2017. As a result the LRB will be empty from the start of the 2017/18 academic year. If this proposal is approved, the provision will formally close on 31 December 2017.



Financial summary

As part of the 2017/2018 budget setting process, it has been agreed that funding will cease for the LRB provision at Llanwern High School with effect from September 2017. The proposal results in part year savings in 2017/2018 of £79,000, and £56,000 in 2018/2019. The proposal seeks to formally close the provision from January 2018. Savings will be achieved in advance of formal closure as funding will no longer be attached to the unit directly. These total savings may be offset by potential additional costs incurred from increased pressure on the Council’s Special Educational Needs budget if any of the pupils currently in the unit require specialist provision or additional curriculum. These figures, if they arise, cannot be quantified at the present time as they will be needs led, and will need to be managed within other specific ALN budgets.

Alternative options considered

Option 1

To transfer the existing pupil cohort to alternative settings from September 2017, resulting in the LRB being declared empty, and subsequently permanently closing the provision on 31st December 2017. This is the preferred option.



Option 2

To enable the existing Year Seven cohort to return to the provision in September 2017 for a further academic year, but alongside this not admit any further pupils to the setting, therefore permanently closing the setting on 31st August 2018. This could however lead to further isolation of the smaller number of pupils placed within the LRB.

Option 3

To informally close the LRB provision simply by not admitting pupils to the facility and therefore not provide any funding to support it. There would be no requirement to carry out a statutory proposal if this was the preferred option but this is not considered appropriate as the LRB would still be a registered provision. This could lead to issues in terms of future Special Education Needs tribunals.

Option 4

To maintain the status quo by continuing to fund and support the existing LRB provision at Llanwern High School. There would be no requirement to carry out a statutory proposal if this was the preferred option but this is not considered appropriate as the LRB is costly to operate and this would not support an earlier Cabinet decision to cease funding the provision.

What will the preferred proposal achieve?

This preferred proposal will support the earlier Cabinet decision to cease funding the provision and therefore will assist in meeting the required budget savings. The LRB is a costly provision and alternative and appropriate specialist education can be sourced elsewhere within Newport.

School organisation arrangements

Catchment area - There is no catchment area for Llanwern LRB and therefore current catchment areas across Newport are unaffected by this proposal.

Admissions - Pupils are not able to apply for a place at Llanwern LRB via the council's usual admission arrangements. The council's admissions policy is therefore unaffected by this proposal.

Transport - Where appropriate, transport is provided in accordance with the council's policy. This is unaffected by this proposal.

Governance - This proposal will not impact on the current school governance arrangements. The make-up of the governing body will be unchanged.

Staffing - Llanwern High School currently employs four members of staff to support the pupils within the LRB – a teacher who has a Teaching and Learning Responsibility (TLR) point and an associated Special Education Needs allowance and three Level 3 Teaching Assistants. If the LRB was to close, these posts would be declared at risk of redundancy. The Governing Body could however choose to utilise these individuals elsewhere across the school to meet curriculum needs.

Advantages and disadvantages

The advantages of this proposal are as follows:

- Supports the earlier decision by Cabinet to cease funding the provision as part of the 2017/18 budget proposals;
- Reduces the significant operational costs associated with running a specialist provision for only a small number of pupils;
- Enables alternative placement solutions to be sought to support individual pupil needs in the most appropriate environment and ultimately back into mainstream education;
- Current LRB accommodation can be transferred to mainstream school use.





The disadvantages of this proposal are as follows:

- The pupils already attending the provision, and their parents, may be reluctant to move to an alternative placement;
- The staff currently employed to work within the provision could be at risk of redundancy;
- There could be increased pressure on placements at the Pupil Referral Unit and in turn on the Special Educational Needs budget if alternative placements needed to be sourced from elsewhere.

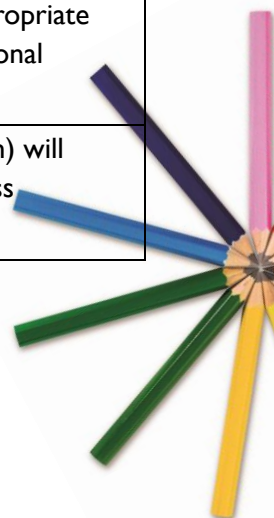
Risks

The risks associated with this proposal, and mitigating factors are listed below:

Risk	Mitigating factor
Appropriate alternative provision cannot be sourced for the pupils currently on roll.	This is unlikely. Whilst pupils and their parents may be anxious about any proposed movement, such transition arrangements would need to be handled very sensitively with assistance where appropriate from the Education Psychology and Additional Learning Needs teams.
Demand for provision increases across the city.	The Assistant Head of Education (Inclusion) will continue to plan for future provision across the city.

Impact assessments

A fairness and equalities impact assessment has been conducted for this proposal and is available on the council website.





Consultation response pro-forma

Removal of learning resource base provision from Llanwern High School

Your views matter. Please tell us what you think about the proposal by completing this questionnaire and returning it to the Education Service Development Manager, Newport City Council, Room 425W, Civic Centre, Newport NP20 4UR. Alternatively you can email your response to school.reorg@newport.gov.uk

The closing date for the submission of responses to this consultation is midnight on Sunday 24 September 2017.

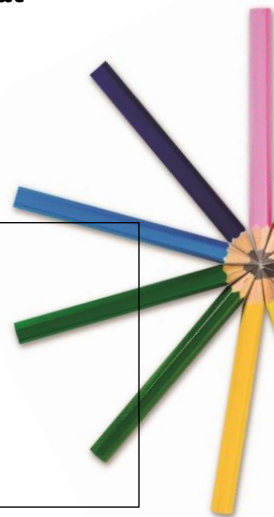
Please note that negative responses made to this consultation will not be counted as objections to the proposal, they will be recorded as adverse comments. Objections can only be registered following the publication of a statutory notice.

Do you support the proposal to permanently close the Learning Resource Base that currently operates within Llanwern High School?

Yes

No

Please use the box below to give any reasons or comments (including alternative options).



Please indicate who you are (e.g. parent/carer of a child attending a local nursery)

If you wish to be notified of the publication of the consultation report, please supply your contact details:

E-mail: _____

Postal address: _____
